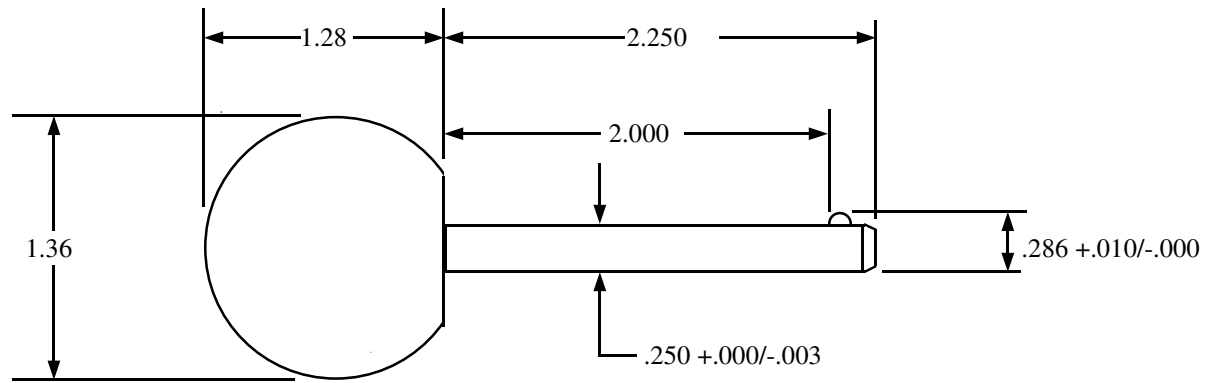
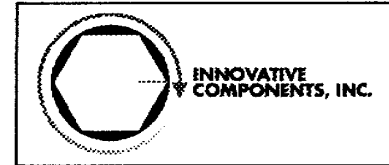


Rev 0 MTO 2/26/05 Release
Rev 1 BJS 1/14/08 Changed knob diameter



THE DRAWING ON THIS PRINT AND INFORMATION THEREWITH
ARE PROPRIETARY TO INNOVATIVE COMPONENTS, INC. AND
SHALL NOT BE USED IN WHOLE OR IN PART WITHOUT THE
WRITTEN CONSENT OF INNOVATIVE COMPONENTS, INC.

Tolerance: +/- .03
Unless otherwise noted

SCALE: NONE DRAWN BY: MTO
P/N KN4X2250B3-D-21 DATE: 2/26/05
MATERIAL: Ball: PP Pin: steel, zinc