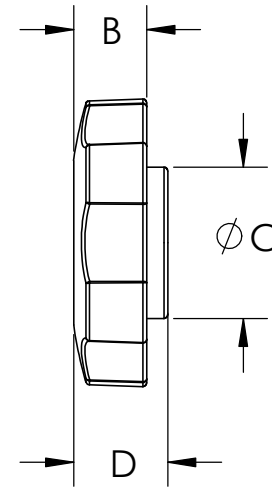
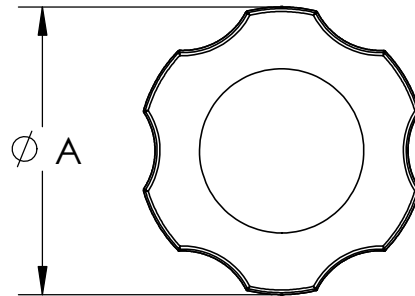


Knob Style	Screw Size	Part Number	A	B	C	D
O3	1/4 M6	KS4X---O3--*-- KSM6---O3--*--	1.500	0.375	0.780	0.475
O3	5/16 M8	KS5X---O3--*-- KSM8---O3--*--	1.500	0.375	0.780	0.475
O3	3/8 M10	KS6X---O3--*-- KSM1---O3--*--	1.500	0.375	0.780	0.475

Code Guide:

*= Color
 5= Black
 R= Red
 G= Gray
 Y= Yellow
 N= Natural



FOR CUSTOMER APPROVAL ONLY		REV	BY	DATE	COMMENT	DIMENSIONS ARE IN INCHES TOLERANCES FRACTIONAL \pm TWO PLACE DECIMAL \pm 0.10 THREE PLACE DECIMAL \pm 0.050 UNLESS OTHERWISE NOTED	DRAWN	VRR	INNOVATIVE COMPONENTS
NAME:	0	VRR	11/04/14		RELEASE DATE		APPROVED	LQR	
	1	CG	01/27/17		Changed Material and Added N=Natural		DATE	01/30/2017	PART NAME
TITLE:							COMMENTS		1-1/2 Rosette Gang Print
DATE:						KNOB MATERIAL			
SIGNATURE:	PROPRIETARY AND CONFIDENTIAL THE INFORMATION CONTAINED IN THIS DRAWING IS THE SOLE PROPERTY OF INNOVATIVE COMPONENTS. ANY REPRODUCTION IN PART OR AS A WHOLE WITHOUT THE WRITTEN PERMISSION OF INNOVATIVE COMPONENTS IS PROHIBITED.					KNOB FINISH	Acetal	INSERT MATERIAL	PART NUMBER
							Textured		GANG PRINT KS-03
							INSERT FINISH		01-38-17 R1
								SCALE 2:1	SHEET 1 OF 1

