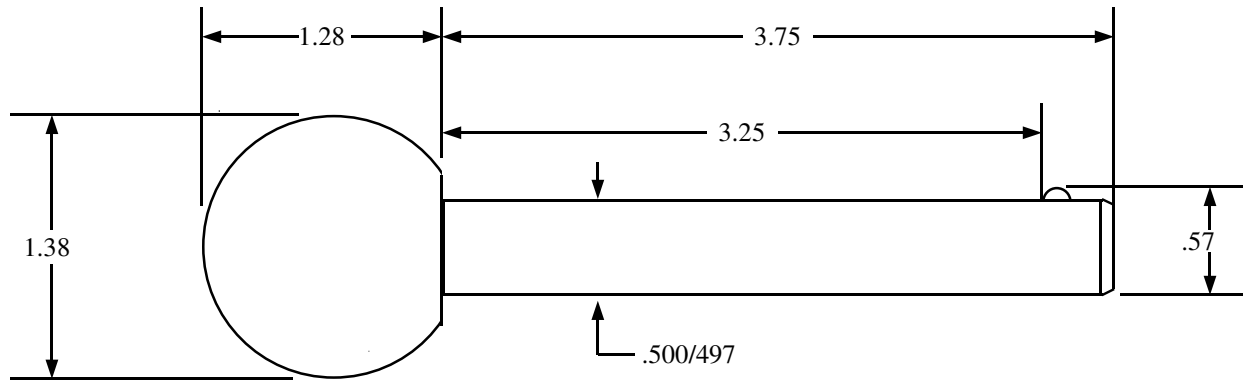
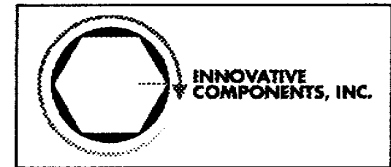


REV	BY	DATE	COMMENT
0	MO	2/22/05	release



THE DRAWING ON THIS PRINT AND INFORMATION THEREWITH ARE PROPRIETARY TO INNOVATIVE COMPONENTS, INC. AND SHALL NOT BE USED IN WHOLE OR IN PART WITHOUT THE WRITTEN CONSENT OF INNOVATIVE COMPONENTS, INC.

TOLERANCES: +/- .03"

SCALE: NONE DRAWN BY: MTO
P/N KN8X3750B3-D-21 DATE: 2/22/05
MATERIAL: Ball: PP Pin: steel, zinc