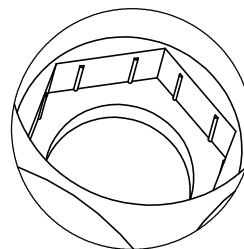
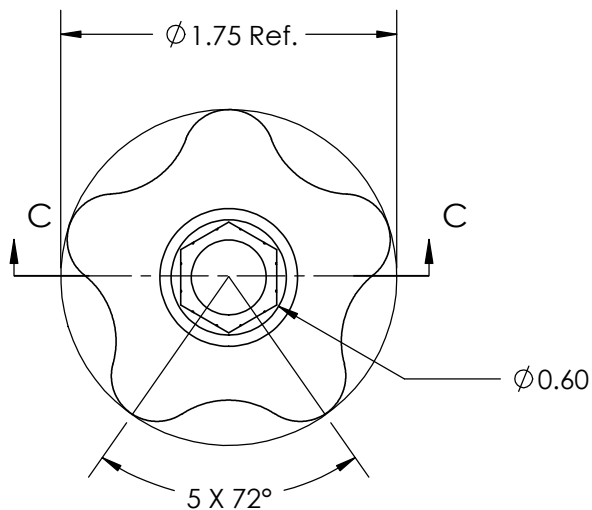
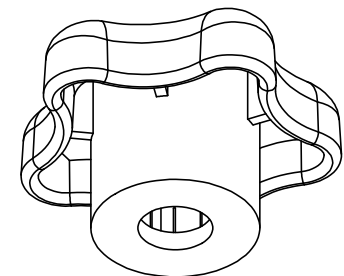
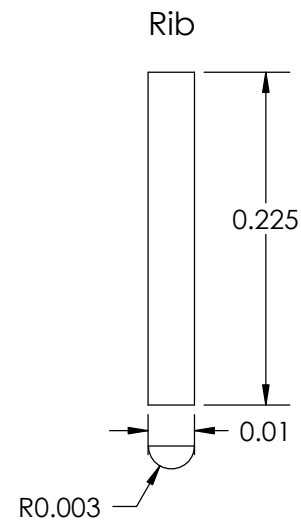


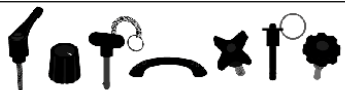
SECTION C-C
SCALE 1 : 1



DETAIL B
SCALE 2:1



FOR CUSTOMER APPROVAL ONLY				REV	BY	DATE	COMMENT	DIMENSIONS ARE IN INCHES TOLERANCES FRACTIONAL ± TWO PLACE DECIMAL ± 0.03 THREE PLACE DECIMAL ± 0.010 UNLESS OTHERWISE NOTED		DRAWN	LQR	INNOVATIVE COMPONENTS	
NAME:				0	JMR	06/03/08	RELEASE DATE			APPROVED	LQR	PART NAME 1.75" Star Knob with 5/16 Hex Hole to Accept Push In	
				1	LQR	06/08/19	Updated Hex Portion Height it was 0.280			DATE	08/06/2019		
TITLE:							COMMENTS						
DATE:								KNOB MATERIAL Polypropylene, Black	INSERT MATERIAL			PART NUMBER KNH2-HEX5S3A---	DRAWING NUMBER KNH2-HEX5S3A--- R1
				PROPRIETARY AND CONFIDENTIAL THE INFORMATION CONTAINED IN THIS DRAWING IS THE SOLE PROPERTY OF INNOVATIVE COMPONENTS. ANY REPRODUCTION IN PART OR AS A WHOLE WITHOUT THE WRITTEN PERMISSION OF INNOVATIVE COMPONENTS IS PROHIBITED.				KNOB FINISH Textured					
SIGNATURE:								INSERT PART NUMBER	INSERT FINISH	SCALE 1:1		SHEET 1 OF 1	



PLASTIC KNOBS / CONTROL KNOBS / HANDLES / QUICK RELEASE PINS & BALL LOCK PINS
 SPRING LOADED PINS & PLUNGERS / WIRE ROPE LANYARDS / THREAD IDENTIFIERS