

MIN. LOOP TENSILE KG	HOLE DIAMETER ± 0.08	MAX. BUNDLE DIAMETER
13	4.8	31.8



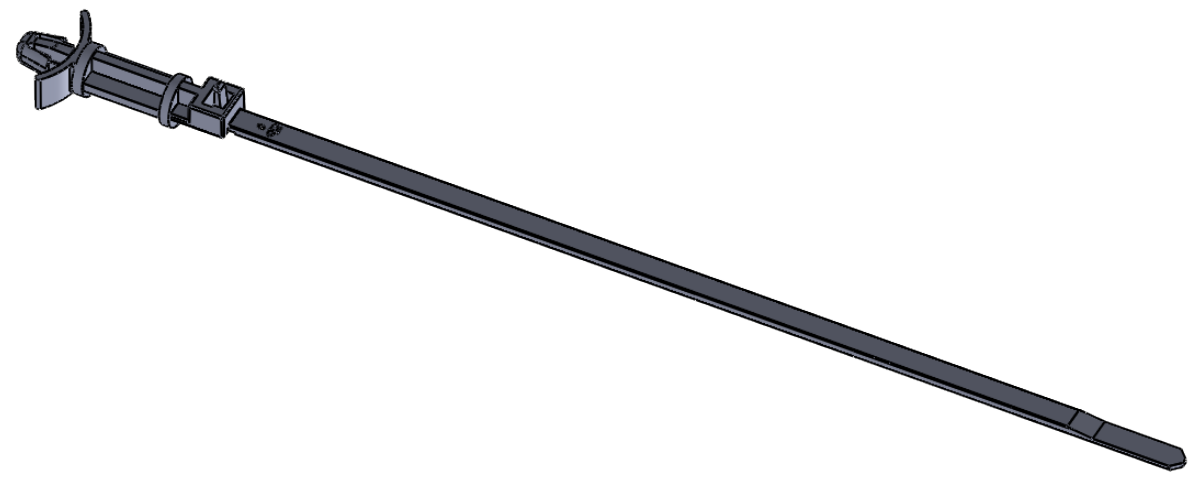
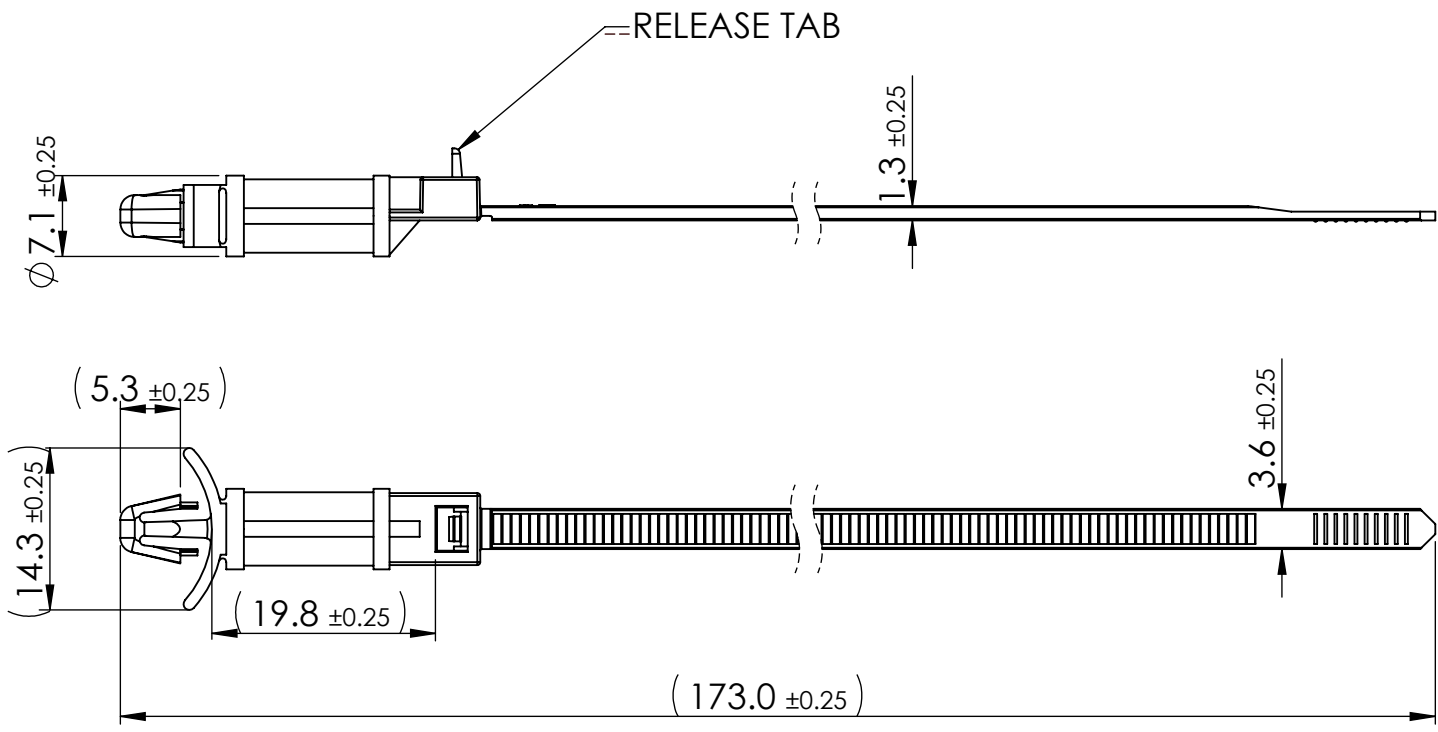
© 2013 Essentra Components. All rights reserved.
Registered in England, Company No. 547495.
Registered Office: Essentra plc
Langford Locks, Kidlington, Oxford, OX5 1HX

Condition of Sale can be found on our website: essentra.com.

Essentra Components does not warrant that the files will be error free and may create new versions ("Upgrades") at any time, which may correct such errors. Essentra Components has no obligation to notify you of such upgrades. Any upgraded file will be published to the website, when it becomes available.

You are not permitted to load any of the files on to a network server for the purposes of distribution to one or more other computer(s) on that network or to effect such distribution. Essentra Components shall not be liable for any loss or damage whatsoever or however caused, arising directly or indirectly from the use of the files.

UNCONTROLLED COPY



STATUS **APPROVED DRAWING**

UNLESS OTHERWISE STATED

ALL DIMENSIONS IN mm			DO NOT SCALE
LINEAR TOLERANCE			THIRD ANGLE PROJECTION
SIZE	(0)	(0.0)	(0.00)
0-10	±0.5	±0.15	±0.10
>10-30	±0.5	±0.20	±0.15
>30-50	±0.5	±0.30	±0.20
>50-100	±0.8	±0.50	±0.25
>100-200	±1.5	±0.80	±0.40
>200-300	±2.0	±1.20	±0.80
>300-500	±3.0	±2.00	±1.00
>500	±5.0	±3.00	±1.50

CREATE DATE 08.10.2022 ORG. SCALE 1:2

ITEM CODE 10036976 MATERIAL NYLON 6/6

LEGACY NUMBER WIT-30RRA-12-M COLOUR / FINISH NATURAL

TITLE: MOUNTING CABLE TIE

DWG. No.	10036976	SHEET	ISSUE
		1 of 2	1

MIN. LOOP TENSILE KG	HOLE DIAMETER ±	MAX. BUNDLE DIAMETER
0.51	0.08	1.251
	0.188	



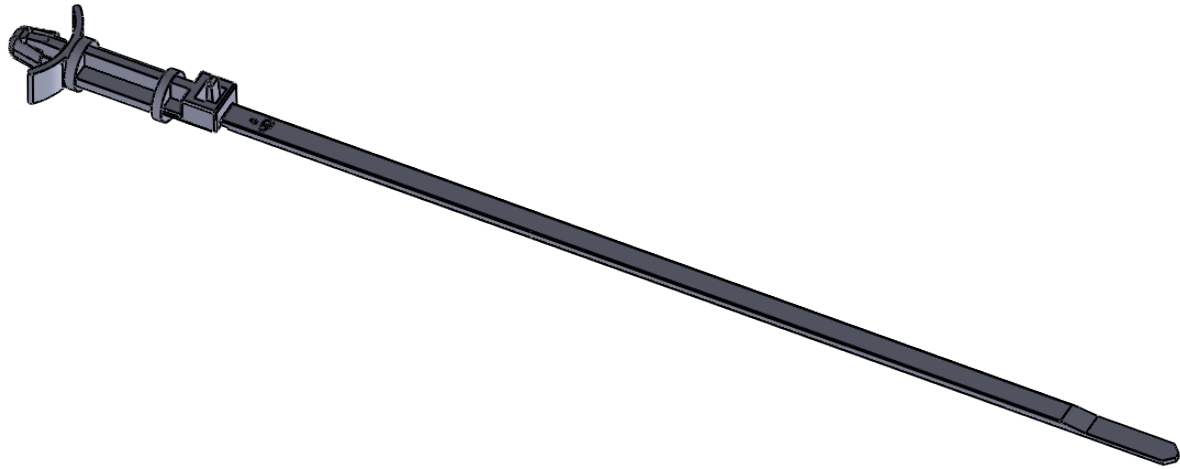
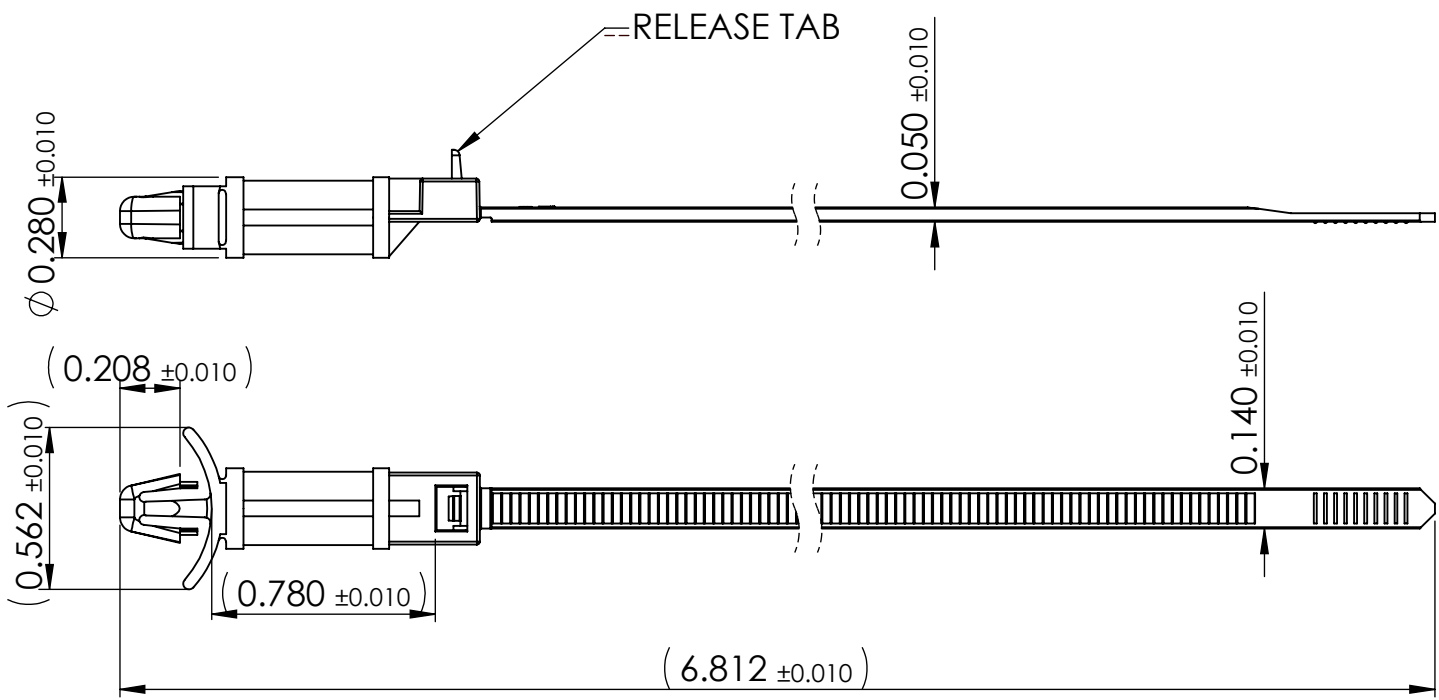
© 2013 Essentra Components. All rights reserved.
Registered in England, Company No. 547495.
Registered Office: Essentra plc
Langford Locks, Kidlington, Oxford, OX5 1HX

Condition of Sale can be found on our website: essentra.com.

Essentra Components does not warrant that the files will be error free and may create new versions ("Upgrades") at any time, which may correct such errors. Essentra Components has no obligation to notify you of such upgrades. Any upgraded file will be published to the website, when it becomes available.

You are not permitted to load any of the files on to a network server for the purposes of distribution to one or more other computer(s) on that network or to effect such distribution. Essentra Components shall not be liable for any loss or damage whatsoever or however caused, arising directly or indirectly from the use of the files.

UNCONTROLLED COPY



STATUS **APPROVED DRAWING**

UNLESS OTHERWISE STATED

ALL DIMENSIONS IN inches			DO NOT SCALE
LINEAR TOLERANCE			THIRD ANGLE PROJECTION
SIZE	(0.00)	(0.000)	(0.0000)
0 - 0.394	±0.020	±0.006	±0.004
>0.394 - 1.181	±0.020	±0.008	±0.006
>1.181 - 1.969	±0.020	±0.012	±0.008
>1.969 - 3.937	±0.031	±0.020	±0.010
>3.937 - 7.874	±0.059	±0.031	±0.016
>7.874 - 11.811	±0.079	±0.047	±0.031
>11.811 - 19.685	±0.118	±0.079	±0.039
>19.685	±0.197	±0.118	±0.059
ANGULAR TOLERANCE			
±0.5 DEGREES			
UNSPECIFIED RADII 0.010 inch			
DRAFT ANGLE 0.5 DEGREES			
DIMENSIONS IN BRACKETS [] ARE IN INCHES FOR REFERENCE ONLY			

CREATE DATE 08.10.2022 1:1 ORG. SCALE

ITEM CODE 10036976 NYLON 6/6 MATERIAL

LEGACY NUMBER WIT-30RRA-12-M NATURAL COLOUR / FINISH

TITLE: MOUNTING CABLE TIE

DWG. No. 10036976 SHEET 2 of 2 ISSUE 1