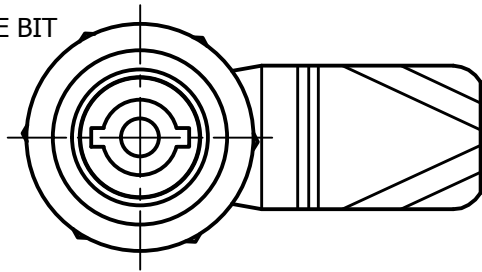
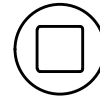


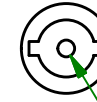
5mm DOUBLE BIT



HEAD DRIVER STYLE



8mm SQUARE



3mm DOUBLE BIT

Ø3.0



8mm TRIANGLE

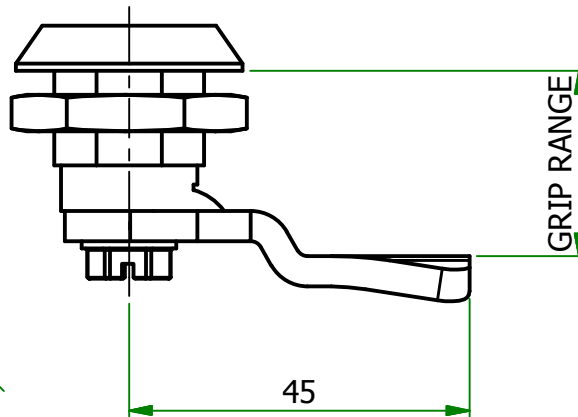
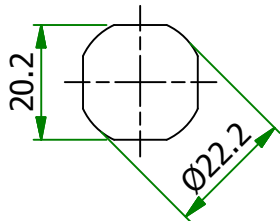


7mm TRIANGLE

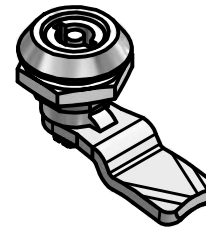


SLOTTED

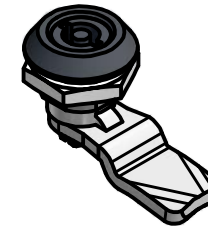
FIXING HOLE



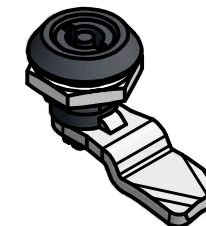
CHROME PLATED



BLACK POWDER COAT



NYLON HOUSING



UNCONTROLLED

Part Number	Head Style	Grip Range	Finish	Part ID
360111534	5 mm Double Bit	24.5	Chrome Plated	1160132



essentracomponents.com

© 2013 Essentra Components. All rights reserved.
Registered in England, Company No. 547495.
Registered Office: Avebury House,
201-249 Avebury Boulevard, Milton Keynes, MK9 1AU

Condition of Sale can be found on our website:
essentra.com.

Essentra Components does not warrant that the files will be error free and may create new versions ("Upgrades") at any time, which may correct such errors. Essentra Components has no obligation to notify you of such upgrades. Any upgraded file will be published to the website, when it becomes available.

You are not permitted to load any of the files on to a network server for the purposes of distribution to one or more other computer(s) on that network or to effect such distribution. Essentra Components shall not be liable for any loss or damage whatsoever or however caused, arising directly or indirectly from the use of the files.

UNLESS OTHERWISE STATED

ALL DIMENSIONS IN mm				DO NOT SCALE	
LINEAR TOLERANCE				THIRD ANGLE PROJECTION	
SIZE	(0)	(0.0)	(0.00)	 ANGULAR TOLERANCE ±0.5 DEGREES UNSPECIFIED RADII 0.25mm DRAFT ANGLE 0.5 DEGREES DIMENSIONS IN BRACKETS [] ARE IN INCHES FOR REFERENCE ONLY	
0-10mm	±0.5	±0.15	±0.10		
10-30mm	±0.5	±0.20	±0.15		
30-50mm	±0.5	±0.30	±0.20		
50-100mm	±0.8	±0.50	±0.25		
100-200mm	±1.5	±0.80	±0.40		
200-300mm	±2.0	±1.20	±0.80		
300-500mm	±3.0	±2.00	±1.00	CREATE DATE: 22/Jul/2010	
+500mm	±5.0	±3.00	±1.50		
ORG.SCALE	1:1				

MATERIAL	ZINC ALLOY
ITEM No.	360111534
TITLE	QUARTER TURN LATCH WITH SPRING

DWG.No.	P020065-1	ISSUE No.	1
---------	-----------	-----------	---