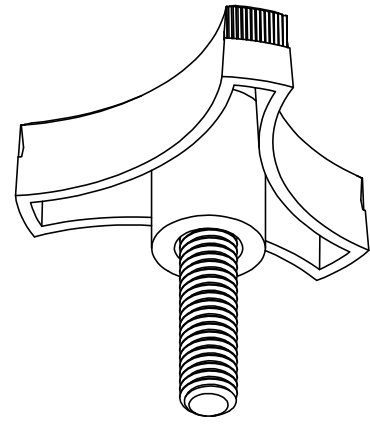
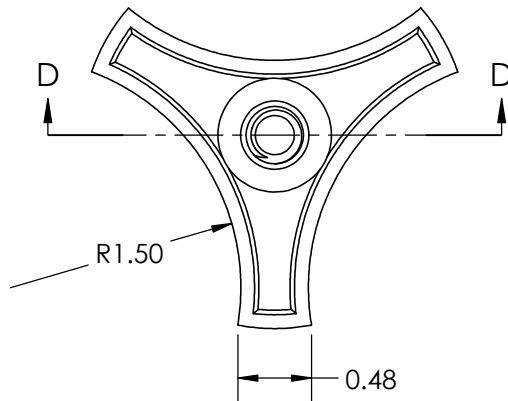
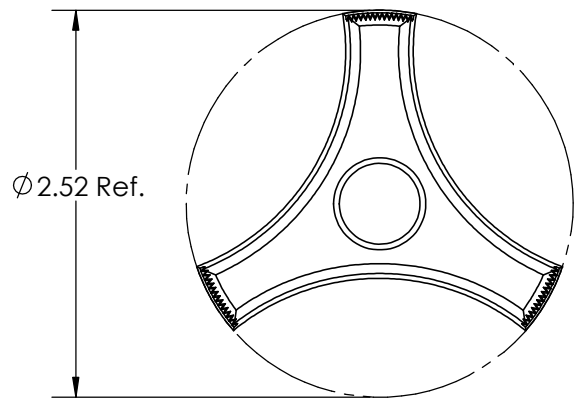


SECTION D-D  
SCALE 2 : 2.5



FOR CUSTOMER APPROVAL ONLY		REV	BY	DATE	COMMENT	DIMENSIONS ARE IN INCHES TOLERANCES FRACTIONAL ± TWO PLACE DECIMAL ± 0.03 THREE PLACE DECIMAL ± 0.010 UNLESS OTHERWISE NOTED	DRAWN	VRR	
NAME:	0	MTO	02/21/03	RELEASE DATE	APPROVED		LQR	PART NAME	
TITLE:	1	BJS	8/31/06	Corrected stud length	DATE		07/16/2014		COMMENTS
	2	VRR	07/16/14	Changed to solidworks format	Material Usage 0.0226 Pounds		PART NUMBER <b>KN6C1250RT7--21</b>		
DATE:	<b>PROPRIETARY AND CONFIDENTIAL</b> THE INFORMATION CONTAINED IN THIS DRAWING IS THE SOLE PROPERTY OF INNOVATIVE COMPONENTS. ANY REPRODUCTION IN PART OR AS A WHOLE WITHOUT THE WRITTEN PERMISSION OF INNOVATIVE COMPONENTS IS PROHIBITED.				KNOB MATERIAL			Polypropylene, Black	INSERT MATERIAL
SIGNATURE:					KNOB FINISH	Textured	INSERT FINISH	Zinc	SCALE 1:1
					INSERT PART NUMBER	BT6C2000HU---21			

