

Data Centres

**SOLUTIONS TO KEEP YOUR  
DATA CENTRES SECURE  
AND ORGANISED**

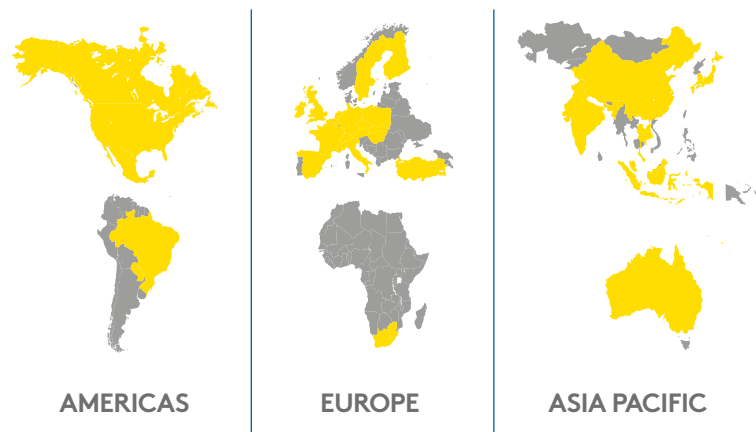


# WHY ESSENTRA?

We are Essentra, a global manufacturer and supplier of critical components for the Data Centre industry and are proud that even the smallest solutions have a big part to play in the transition towards a digital future.

We are a FTSE 250 company. While our reach is global with 14 manufacturing facilities, we maintain strong local knowledge and support through our dedicated local teams in 29 countries. For you, that means our manufacturing capabilities, experience, customer focus, and global infrastructure allows us to deliver best in class solutions, tailored to your needs.

## GLOBAL REACH WITH A LOCAL TOUCH



**"WE APPRECIATE THE REASSURANCE THAT COMES FROM YOUR END-TO-END SUPPORT, FROM THE PROTOTYPING STAGE WITH FREE SAMPLES THROUGH TO PRODUCTION AND ASSEMBLY WITH LARGE VOLUMES FROM STOCK AND QUICK DELIVERY."**

Patrick Berthiaud,  
Company Director, Conceptole

## MANUFACTURING EXPERTISE

**14**  
MANUFACTURING  
SITES GLOBALLY

**CUSTOM**  
DESIGN AND  
MANUFACTURING

**3BN+**  
PARTS  
MANUFACTURED  
PER YEAR

**MANUFACTURING**  
IN **50+**  
**MATERIALS**

**IN HOUSE**  
TOOLING  
CAPABILITIES

**GLOBAL**  
R&D TEAMS

**PLASTIC INJECTION  
MOULDING**



**ZINC DIE CASTING**



**ALUMINIUM INJECTION  
MOULDING**



**STAMPING**



**MACHINING**



**DIP MOULDING**



**POWDER COATING**



**POLYURETHANE SEALING  
FOAM TECHNOLOGY**



**BARREL, CYLINDER, KEYS  
TECHNOLOGY**



**TOOLING**



**3D PRINTING**



**DIE CUTTING**



## INDUSTRY-LEADING PRODUCT QUALITY

Approved against the highest industry accreditations and standards:

**ISO**  
9001:2015

**ISO**  
27001:2013

**ISO**  
14001:2015

**ISO**  
50001:2001

**ISO**  
45001:2018

**IATF**  
16949:2016



# APPLICATION INSIGHTS

Experience optimal performance in the development, operation and maintenance of data centres with our high-quality components. From cable management and locking solutions to PCB hardware components, our range ensures reliable outcomes at every stage of your data centre lifecycle, from inception to completion.

SOLUTIONS DESIGNED TO HELP DATA CENTRES MINIMISE MAINTENANCE TIME AND COST

## OUR SOLUTIONS COVER ALL KEY AREAS



IT CABINET  
HARDWARE



CABLE MANAGEMENT  
SOLUTIONS



PCB MOUNTING  
SOLUTIONS



FIBRE MANAGEMENT  
SOLUTIONS



RACK PDU  
COMPONENTS



## CHALLENGES WE CAN HELP YOU WITH:



Handling of IT cabinets  
and access panels



Routing, organising  
and protecting cables



Access control and security



Network hardware and  
power distribution unit  
(PDU) monitoring



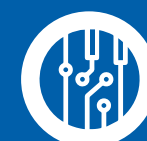
Reducing Electromagnetic  
interference (EMI)



Keeping equipment cool



Splicing fibre cables



Mounting and  
managing PCBs



# SOLUTIONS FOR IT CABINETS

IT Cabinets, also known as data racks or server racks, are an essential component of modern data centres and IT environments. Here are some important considerations we can help you with:

SECURITY



CABLE  
MANAGEMENT



ACCESSIBILITY



VENTILATION  
AND COOLING



FASTENERS



HANDLES



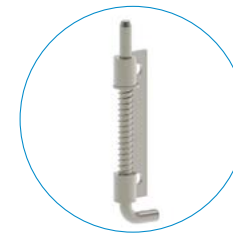
CASTORS



LEVELLING FEET



CONCEALED  
HINGES



LIFT OFF  
HINGES



ROTARY LATCH  
SYSTEM



SWING  
HANDLES



ELS



LOCKS



GASKETING  
(EMI)



DOOR BOTTOM  
BRUSHES





## CABINET LOCKING SOLUTIONS



### ROTARY LATCH SYSTEM FOR MULTIPLE LOCKING POINTS

Rotary Latches offer maximum security and convenience in push-to-close engineering.



### SWING HANDLE LOCKS

Swing Handle Locks are the perfect locking solution for standard sized data cabinets. Available in multiple profiles and locking styles, including implementation with our multiple locking point system for added security.



### FLUSH COMPRESSION LEVER LATCHES

Flush Compression Lever Latches have a low profile and are an ideal cost effective option for cabinets where access control is not required.



### ELECTRONIC LOCKING SOLUTIONS (ELS)

ELS management software and peripherals for server cabinets where remote access, control, and monitoring requirements are important.

## FEET AND CASTORS



### CABINET LEVELLING FEET

Helps adjust cabinets on uneven surfaces and level out correctly, to minimise any movement and vibration damage.



### SWIVEL CASTORS

Swivel Castors with full 360 degree swivel for easy positioning and available with brakes for added stability and safety when cabinets are in place



## HINGES FOR DOORS AND PANELS



### CONCEALED AND CORNER HINGES

Our invisible (concealed) and semi-invisible (corner) hinges provide a clean exterior appearance for IT cabinet doors while critically protecting against tampering. 180 degree rotation and lift-off options available to make access and installation easy.



### SPRING LOADED REMOVABLE CONCEALED HINGES

Concealed Hinges for which left-hand and right-hand application is possible. Ideal for IT cabinet doors and panels that require easy removal and access. Multiple versions available in either zinc plated steel or stainless steel AISI 304 and with screw on or weld on options.

## SEALING GASKETS AND EDGE PROTECTION



### SEALING GASKETS

Our gaskets fill the space where your cabinet doors or panels meet, providing protection against dirt and dust ingress, vibrations and humidity. The flexibility of gaskets are the ideal solution for irregular surfaces. Gasketing made of EPDM also has EMI shielding applications to prevent distortion and data loss.



### EMI GASKETS

Made from polyurethane foam covered in nickel-copper tape. As well as offering edge protection and sealing, they offer reduction in radiated emissions, high noise reducing characteristics 80-90dB high noise 80 - 90dB and low resistivity 0.8  $\Omega$ -cm.

## HANDLES



### RECESSED HANDLES

Recessed Handles with screw mount or push-fit options can be mounted flush to a door or panel. Ideal solution for all removable panels on IT cabinets to help make handling easier.



### PULL HANDLES

Our Pull Handles are used to help with opening and closure for doors and access panels on IT cabinets. They have an ergonomic design and maintain excellent stability even for heavier requirements.

## CABLE ENTRY



### BRUSH STRIPS FOR CABLE ENTRY

Available in screw fitted or seal fitter styles. Prevents dust and ingress entering the cabinets while allowing cable entry into the cabinet.



### FASTENERS

Our panel rivets and fasteners are lightweight but strong and allow for quick installation and release to making maintenance access simple. Available in multiple fixing styles and colours to meet your needs



# SOLUTIONS FOR MANAGING CABLES

Cable management is important for data centres as it helps make sure that the tools and infrastructure work well and are taken care of. Here are a few specific reasons why data centres need good cable management:

BETTER AIRFLOW

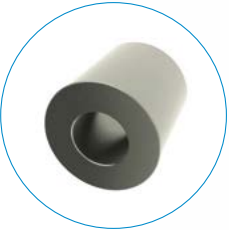
EASY MAINTENANCE

REDUCED DOWNTIME

IMPROVED SAFETY



CABLE ENTRY MANAGEMENT



FERRITES



CABLE CLIPS & CLAMPS



MARKER CABLE TIES



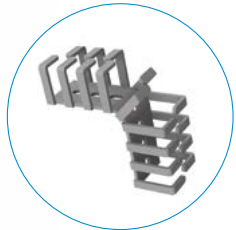
CABLE TIES



CABLE GLANDS & GROMMETS



CABLE WRAPS



CABLE DUCTS & CONDUITS



CABLE STRAPS



CONNECTOR CAPS & COVERS





## CABLE TIES



### HEAT STABILISED CABLE TIES

We offer a wide range of cable ties to help secure cables in place, route them efficiently or bundle them together. Ideal for applications where heat is generated or present. UL94 V-2, UV resistant with greater stability properties in harsh environments.



### HOOK & LOOP CABLE TIES

Ideal for multiple applications where they need to be re-used or the bundled wires are more fragile and require extra care. Also available with plastic buckle.



### CABLE STRAPS

Can be wrapped and secured around a number of cables to bundle them together. Available in elastomer or nylon material, the nylon variant must be used with the locking strap supplied separately.



### MARKER CABLE TIES

Our Marker Cable Ties provide a simple and cost effective solution to both secure and label your cable ties. The integrated plastic label tag allows you to easily write on the cable ties and provide clear identification.

## CABLE ENTRY



### CABLE GLANDS

Provide entry for a cable into an enclosure. With variations in thread size, colour and mounting thread lengths the range supports an array of options to suit your application needs.



### BRUSH STRIPS FOR CABLE ENTRY

Available in screw fitted or seal fitter styles. Prevents dust and ingress entering the cabinets while allowing for cable entry.

## TERMINAL INSULATORS



### TERMINAL INSULATORS

Our Terminal Insulators protect connection points at the end of cables to prevent short circuits. They are Manufactured in non-conductive plastic

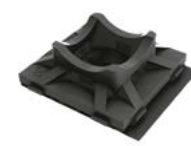
## DUST COVERS



### CONNECTOR CAPS & COVERS

Our Dust Covers & Caps are used to protect cable connection points from ingress of dirt and moisture when not in use.

## CABLE TIE MOUNTS AND CLIPS



### CABLE TIE MOUNTS

Our range offers versatility in terms of mounting options, securing long wires and cables to various surfaces, including: adhesive mounted, hole mounted, edge mounted and screw mounted.



### CABLE CLAMPS

Features a flat side intended for limited space applications where cable routing needs to be done close to panels and a cupped base that provides extra stability. Rated UL94 V-2.

## CABLE PROTECTION



### CABLE DUCTS

Adhesive or screw mount flexible cable conduit channels to route wires. The ribbed design allows for wires to break out when necessary.



### SLIT HARNESS WRAP

Perfect for organising and protecting cables, providing a durable, crush-resistant shell without restricting flexibility. Wires are easily fed into the harness with the compatible installation tool.



### CABLE CONDUIT

Plastic UL94-V2 conduits are highly flexible and have a high fatigue life. Its high impact strength aids its recovery capability when crushed. IP66 rated when used with standard fittings.



### SELF CLOSING CABLE WRAPS

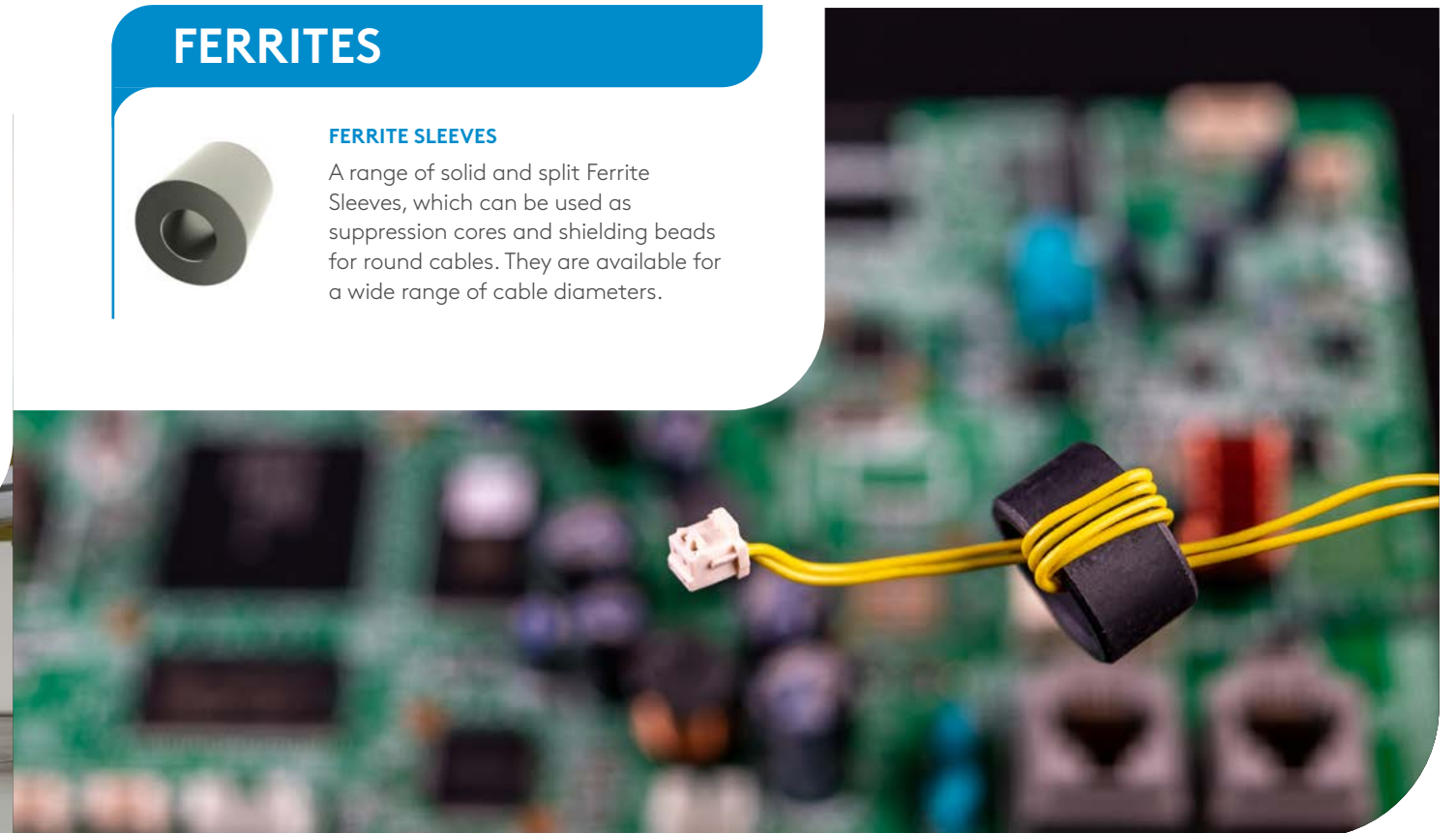
Our Self Closing Cable Wraps offer excellent cable protection with the added benefit that they have an overlap design which means it can be installed even after cables have already been assembled or installed.

## FERRITES



### FERRITE SLEEVES

A range of solid and split Ferrite Sleeves, which can be used as suppression cores and shielding beads for round cables. They are available for a wide range of cable diameters.



# SOLUTIONS FOR INSIDE THE CABINET

Our products also play a critical role in PCB Mounting, Fibre Management & Power Distribution Units (PDUs). We offer a wide range of solutions to help mount and manage PCBs, optoelectronics, power and fibre cables across all your IT equipment. Here are a few to demonstrate how we can support you:



## CARD GUIDES & PULLERS

Our Card Guides & Pullers are easy to use and provide protection from undue stress for damage-free insertions and extractions of PCBs, components and connectors.

## SUPPORTS

Designed to support the mounting and joining of a PCB onto a chassis or surface. Mounting types include double sided mounting and non-threaded options, manufactured from plastic and nylon. UL94 rated variants available.

## INSULATION STANDOFFS

Provide sturdy, insulated spacing for high-powered electronic applications. Made of nylon with brass inserts. Rated UL94 V-2. Do not require assembly equipment and can easily be installed by hand.

## FIBRE SPLICE PROTECTORS

Offer high protection for fibre. Two types available both consist of inner and outer tubing's. Type 1 includes a stainless steel rod and type 2 uses a ceramic rod. Clear in appearance.

## SPACERS

Provide space as well as thermal and electrical insulation between components. Plastic, nylon and metal variants available where higher-maximum service temperatures or improved strength and stiffness are required.

## FAN HARDWARE

Filters, gaskets, guards, mounts and grounding terminals ensure your PCBs are not impaired by fan inefficiency.

## FIBRE SPLICE TRAYS

Stackable to any number, and inter-tray fibre routing is possible through slots along the long sides of the tray. Lid, trays, and hinges are sold separately or in a kit. Flame resistance; UL94 V0 and UL94 HB.

## LED MOUNTING HARDWARE

Commonly used in PDUs and server equipment to signal status, our LED mounting hardware includes holders, light pipes, mounts and spacers.

## MAKING IT EASIER FOR YOU WITH:

### EXPERTISE

Manufacturing plastic injection moulded, vinyl dip moulded & metal solutions

- 65 years experience
- 3bn+ parts made per year
- Over 400 machines worldwide
- 50,000 moulding tool options

### FLEXIBILITY

Manufacturing in 14 global locations

- Over 1 billion parts in stock
- 100k+ SKUs across 20 product ranges
- 3D CAD & 3D Print tools
- Custom design and manufacturing capabilities

### SUPPLY CHAIN EXCELLENCE

A connected global supply chain for fast delivery & predictability

- 24 distribution centres serve over 20 languages
- Multiple hubs offer resilience to unexpected market conditions
- Efficiencies through automated warehouse processes

## SUPPORTING YOUR SUSTAINABILITY GOALS

We're making it easier for you to achieve your sustainability goals by developing products that reduce your impact on the environment.

### HOW?

- Developing sustainable component solutions by using more sustainable materials and making our products recyclable
- Circular Plastics Alliance commitment to use at least 20% recycled content by 2025
- Introduced over 50% recycled content in many of our LDPE & PP ranges
- Assisting you by providing information to support your scope 3 reporting

### OUR COMMITMENT TO YOU AND OUR PLANET

- Committed to setting science-based targets for emissions reduction, targeting net zero in our direct operations by 2040, and in our value chain by 2050
- Targeting all of our sites to achieve zero waste to landfill by 2030 at the latest
- Supporting a circular economy by ensuring 100% of our packaging is reusable, recyclable or compostable by 2030
- Aiming for 50% recycled content in our packaging materials by 2030





# LET'S TALK

For more information, please contact your nearest Essentra office:

## AUSTRALIA

Tel : 1800 377 111

[sales@essentracomponents.com.au](mailto:sales@essentracomponents.com.au)

[www.essentracomponents.com.au](http://www.essentracomponents.com.au)

## MALAYSIA

Tel : +603 5568 1988

[sales@essentracomponents.my](mailto:sales@essentracomponents.my)

[www.essentracomponents.com.my](http://www.essentracomponents.com.my)

## INDIA

Tel : +91 78997 39157

[sales@essentracomponents.co.in](mailto:sales@essentracomponents.co.in)

[www.essentracomponents.co.in](http://www.essentracomponents.co.in)

## SINGAPORE

Tel : +65 6841 3266

[sales@essentracomponents.com.sg](mailto:sales@essentracomponents.com.sg)

[www.essentracomponents.com.sg](http://www.essentracomponents.com.sg)

## THAILAND

Tel : +66 2 007 2192

+66 65 965 4406

[sales@essentracomponents.co.th](mailto:sales@essentracomponents.co.th)

[www.essentracomponents.co.th](http://www.essentracomponents.co.th)

## VIETNAM

Tel: +84 3571 96311

[saled@essentracomponents.vn](mailto:saled@essentracomponents.vn)

[www.essentracomponents.vn](http://www.essentracomponents.vn)