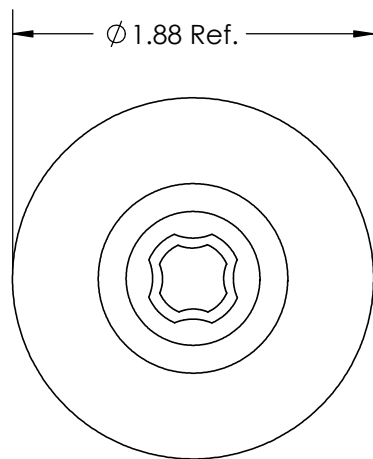
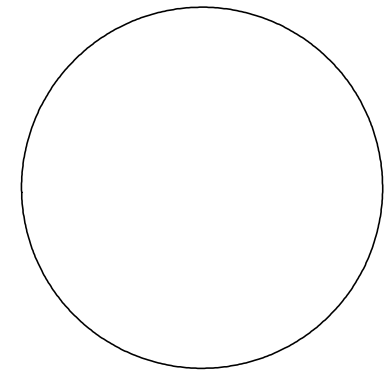
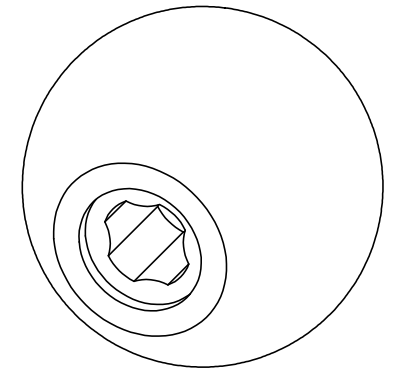
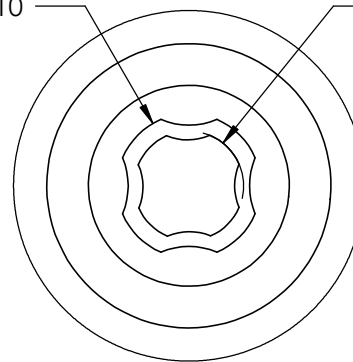


SECTION C-C



Accepts 3/8, M10

Accepts 1/2, M12



DETAIL B
SCALE 1.5 : 1

FOR CUSTOMER APPROVAL ONLY		REV	BY	DATE	COMMENT	DIMENSIONS ARE IN INCHES	DRAWN	VRR		
NAME:	0	LRM	04/21/08	RELEASE DATE		FRACTIONAL ±	APPROVED	LQR		
TITLE:	1	CG	09/09/19	Added Thread Types		TWO PLACE DECIMAL ± 0.03	DATE	09/16/2019	PART NAME	
DATE:						THREE PLACE DECIMAL ± 0.010	COMMENTS Soft Touch Material Usage: 0.03885 Pounds		1.88" Ball Knob, Universal Soft Touch Accepts 3/8 & 1/2 and M10 & M12 Thread Types	
SIGNATURE:	PROPRIETARY AND CONFIDENTIAL THE INFORMATION CONTAINED IN THIS DRAWING IS THE SOLE PROPERTY OF INNOVATIVE COMPONENTS. ANY REPRODUCTION IN PART OR AS A WHOLE WITHOUT THE WRITTEN PERMISSION OF INNOVATIVE COMPONENTS IS PROHIBITED.				KNOB MATERIAL Polypropylene, Black	COMMENTS Accepts either fine or coarse threads	INSERT MATERIAL N/A	PART NUMBER		
						KNOB FINISH TYPE 48 SHORE A			KN6X-8X-B7--S--	DRAWING NUMBER
						INNER PART NUMBER KN6X-8X-B5----	INSERT FINISH N/A		SCALE 1:1	KN6X-8X-B7--S-- R1
										SHEET 1 OF 1



PLASTIC KNOBS / CONTROL KNOBS / HANDLES / QUICK RELEASE PINS & BALL LOCK PINS
 SPRING LOADED PINS & PLUNGERS / WIRE ROPE LANYARDS / THREAD IDENTIFIERS